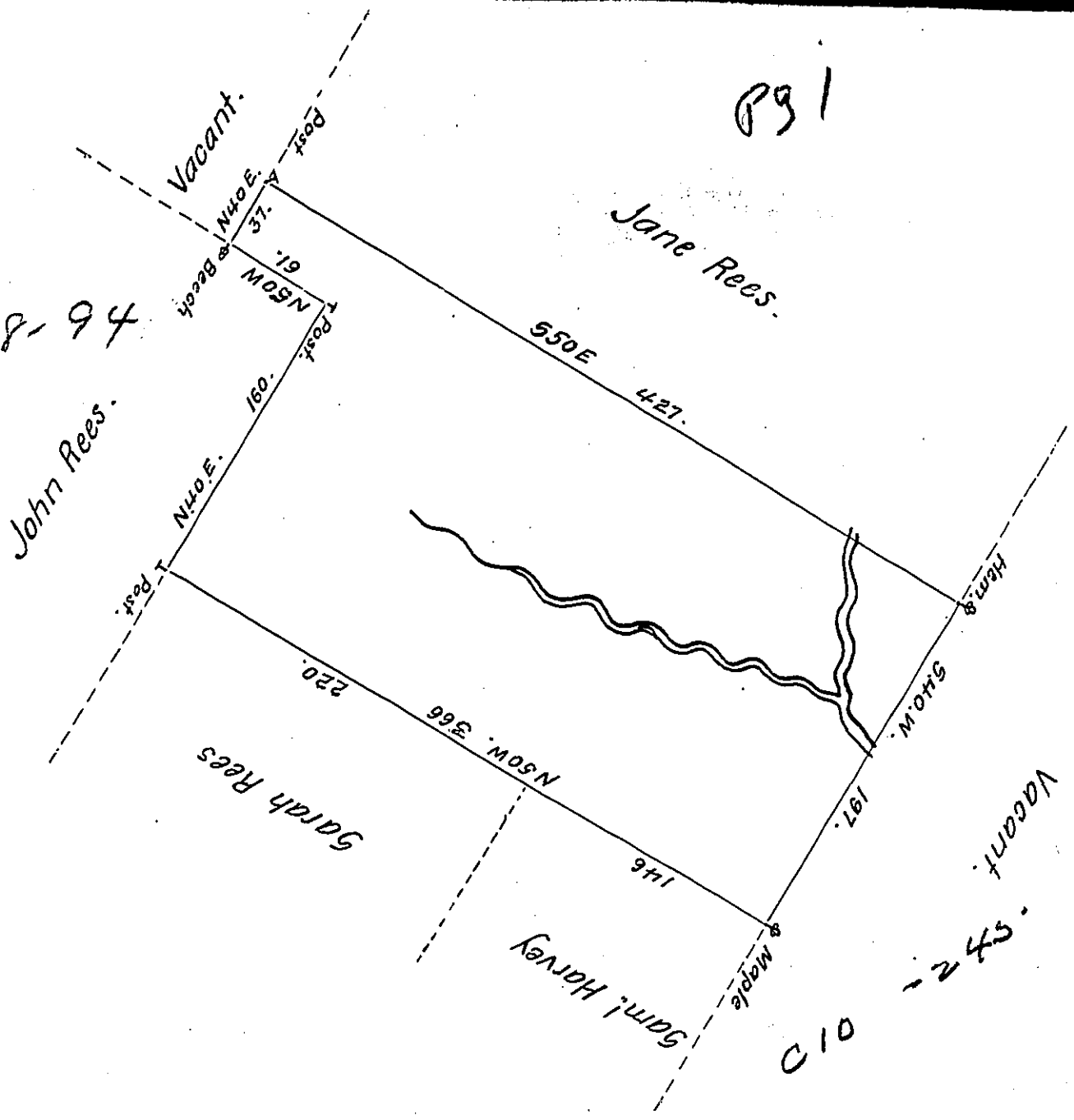


C188-94

891



By Virtue of a Warrant dated the 5th December 1792 Surveyed
 the 21st June 1793 to Daniel Rees the above described tract of Land Sit-
 -uate on a branch of Trout Creek about five mile from Sullivans Road
 & half a mile from Lehi in the County of Northampton, Containing
 Four Hundred & thirty-eight Acres, Seventy perches & the allowance of
 Six $\frac{7}{8}$ Cent & c^a ~

Daniel Brodhead Esquire
 Surveyor General..

$\frac{7}{8}$ Geo Palmer D.S.

IN TESTIMONY that the above is a copy of the original remaining on file in
 the Department of Internal Affairs of Pennsylvania, made
 conformably to an Act of Assembly approved the 16th day of
 February, 1833, I have hereunto set my Hand and caused
 the Seal of said Department to be affixed at Harrisburg,
 this eleventh day of October 1906

Geo. Palmer
 Secretary of Internal Affairs.